

COMMON PURPOSE INFILTRATION AND SUBVERSION OF SOCIETY

The following 3 diagrams show how Common Purpose operates.

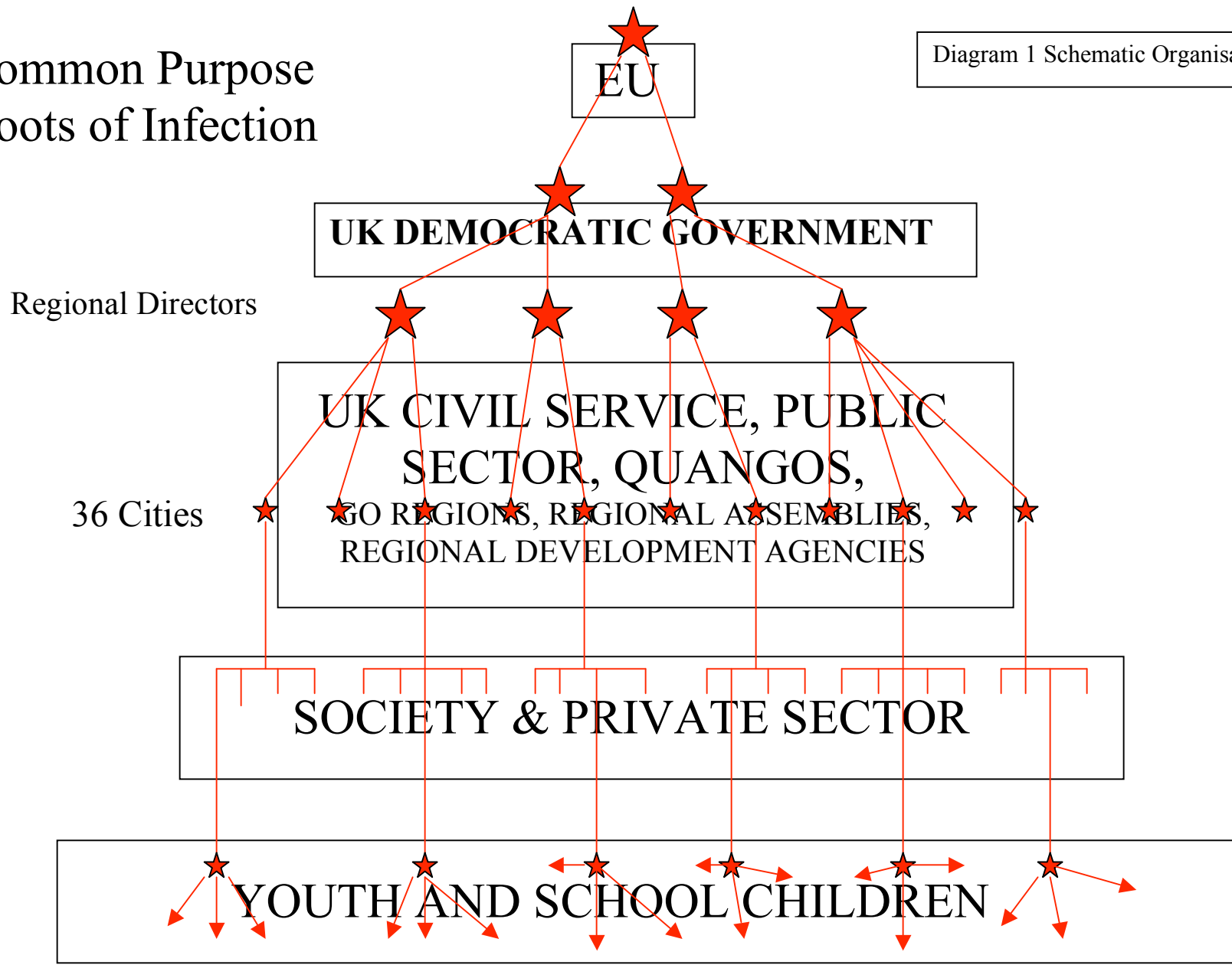
Diagram 1 shows the Schematic Organisation of Common Purpose. Directed from high levels of the International Banking Conspiracy e.g. Deutsche Bank, and the European Union, Common Purpose has penetrated across and through UK society. Four Regional Directors oversee the CP cells in cities across UK. These cells constantly recruit new CP ‘graduates’ using the local CP Advisory group members to recruit, assess and select the next batch of graduates. Existing graduates ‘network’ to promote and spread the ‘Common Purpose’ of CHANGE within UK, through government, civil service, public and private sectors, university and schools. The resulting NETWORK of pro EU ‘CHANGE AGENTS’ grows like the penetrating roots of a tree.

Diagram 2 Subversion of Society shows how Common Purpose takes up the CHANGE policy and initiatives of a number of very powerful and highly political “Think Tanks”. These include Marxist DEMOS, Tavistock Institute, Royal Institute of International Affairs, Work Foundation, YOUNG FOUNDATION, Foreign Policy Centre and others. Having ‘absorbed’ their Fabian CHANGE doctrine, Common Purpose then ‘injects’ it into the very fabric of our democratic society by the Common Purpose graduates and cells already established within the machinery of national and local government. Courses include MATRIX, YOUR TURN, NAVIGATOR, THE KNOW and 360. Pro EU Regional government and quangos are highly targeted, as are young people and school children. Some MPs and Local Councillors are now also being targeted for Common Purpose training and exposure to Common Purpose CHANGE policies. Minority populations such as British Muslims are also being targeted for Common Purpose ‘leadership’ training, as are the 170,000 so called charities now operating within UK. Together with their £44 billion budget, these charities are the “HIDDEN HAND, or so called “THIRD SECTOR”, designed to help undermine democracy and implement the new dictatorship of the selected Common Purpose ‘Elite’. The New Blair Brown Labour fabian government has already attempted to pass laws making it legal for charities to be politically active. This initiative has failed, but meanwhile the unlawful political activities of many charities continues. As their influence grows, so we see more and more ‘ridiculous’, crazy, mad, and strange laws and rules enforced on the unsuspecting population. This is the psycho socio political economic attack of the fabian agenda.

Diagram 3 Control of a ‘Host’ City. Just as with any parasite living on a ‘host’ body, Common Purpose actively targets control of a city by recruiting a relatively small number of key people within the ‘Executive’ Structure of a city. Providing Common Purpose can recruit and then control these key people, they will, in turn, control the whole management of the city. This is becoming more and more noticeable to Local Councillors who see and experience a loss of their democratic powers of governance as Elected Members. Instead democracy is replaced with a covert control system through a Common Purpose trained partnership, which includes Council Officers, Police, Health Service, Regional Government, Regional Development Agencies, Chamber of Commerce and University sector. Meeting in secret under Common Purpose’s “CHATHAM HOUSE” rules, the new CHANGE agenda is planned and promoted by mentally re-framed Common Purpose graduates. Those who oppose or stand in the way of the new elitest agenda are known to Common Purpose as “BLACK HOLES” (SEE JULIA MIDDLETON Common Purpose CEO’s book – BEYOND AUTHORITY). Such people are to be stalled, blocked, ignored or steamrollered through. Julia Middleton believes Common Purpose makes its own authority and graduates are elite leaders destined to act “Outside their own Organisational Authority” to create the new utopian post democratic society. As victims most Common Purpose graduates have little or no idea that they are being used to create a police state within UK. The cancer is now spreading fast within the USA and Commonwealth Countries.

Common Purpose Roots of Infection

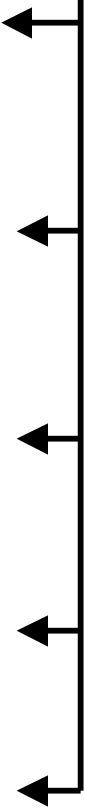
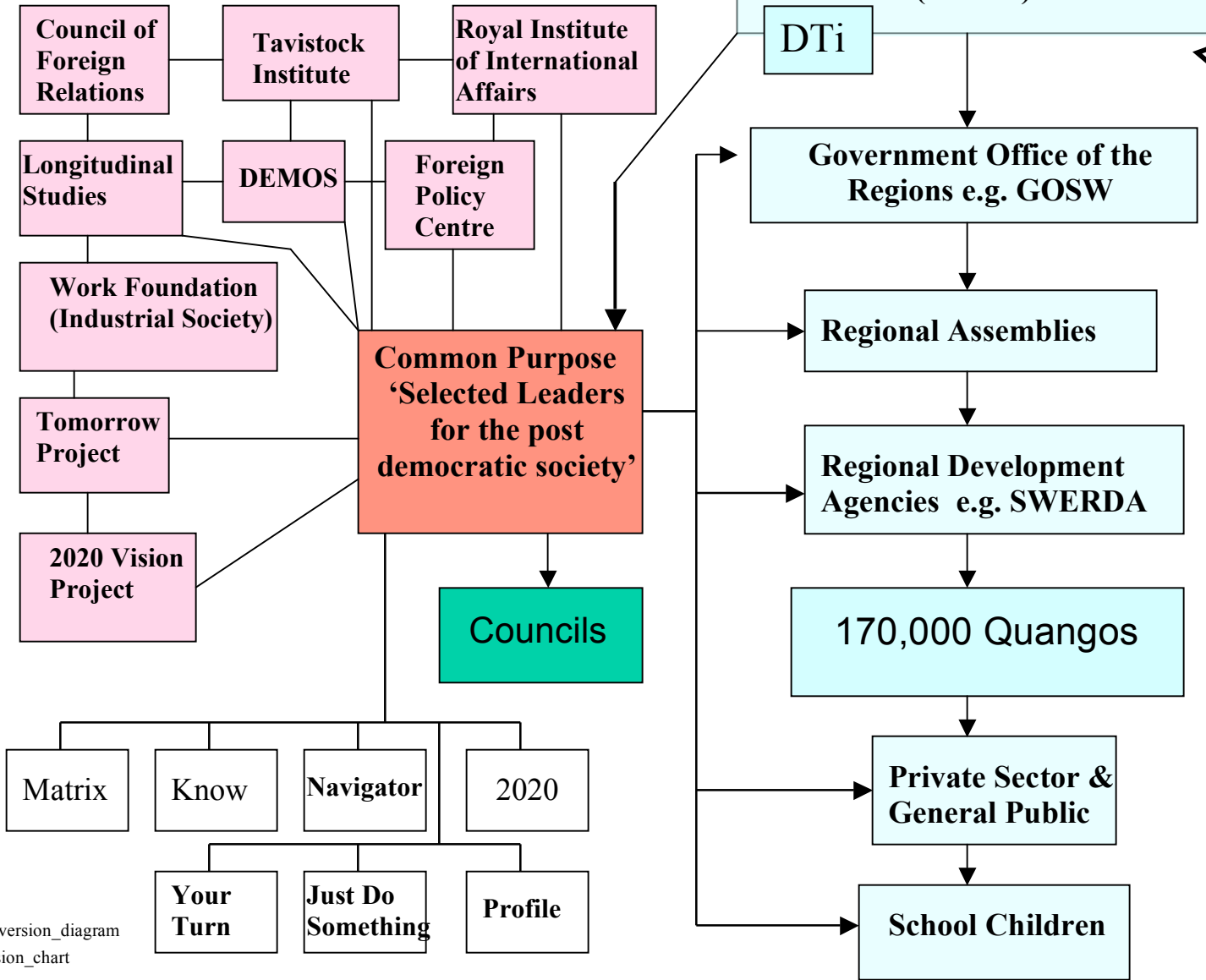
Diagram 1 Schematic Organisation



Subversion of UK Democracy

'Covert EU Control'

'Covert Quango Control'



B J Gerrish Mar 2006

tbversion_diagram
:rsion_chart

Diagram 2 Subversion of Society

Diagram 3 Control of a City

How to Control your Host City – by Common Purpose

